



Corporate Office

142 Conchester Highway

Aston, PA 19014

888.651.SIGN

610.497.0110 (fax)

info@kcsignco.com

Delaware Sales Office

302.777.5080

New Jersey Sales Office

609.729.0200

Website

www.kcsignco.com

KC Sign & Awnings is a full service, interior and exterior signage provider with over 20 years of servicing the PA, NJ, DE, & MD region. Our company's commitment to delivering the highest quality products - on time, has helped us to become one of the top choices for signage in the area. Now with multiple locations and a full time on the road staff, we can be there to serve you faster than any other sign company in the region.

Our Services Include:

- Creative Design and Manufacturing
- Dedicated Sales People & Account Managers
- In House Fabrication, Installation, & Service
- Retail & Wholesale Channel Letter Manufacturing
- Site Surveys and Permitting Services
- Detailed Shop Drawings and Engineering
- Excavation, Concrete Footers, and High Pole Setting
- Custom Brick & Stone Work
- On-Time Installations, Service & Repairs
- Full Service Vinyl & Print Shop
- UL Listed Fabrication Shop
- The Highest In Quality - Guaranteed

Our corporate office and manufacturing facility is located 10 miles south of the Philadelphia International Airport with direct access to I-95 and other major roadways. With over 20,000 square feet and manufacturing space, 5 crane and bucket truck crews, and various other installation vehicles, KC Sign is here to meet all of your timeline and quality needs.

Design Capabilities:

Creative, quality signage displays an image of integrity and trust to the viewer. At KC Sign & Awnings, we strive to provide innovative and current designs for all our signage projects, as well as practical designs that can be easily implemented into the manufacturing process. Our degreed art designers will work directly with you to come up with a design that fits all of your needs.

Manufacturing Capabilities:

Custom interior and exterior signage such as pylon signs, wall signs, monuments, channel letters, electronic message centers, way-finding programs, ADA signage, bronze plaques and letters, specialty directories, scoreboards, carved signs, neon, flags and flagpoles, clocks, street signs, fabric and metal awnings, banners, and digital and vinyl graphics. Over 20,000 square feet of manufacturing space.

Installation Capabilities:

We employ four full time installation crews, including three high reach crane trucks, a two man bucket truck, and a platform lift truck. In addition, we have a dedicated excavating crew, vehicles for smaller scale signage installation, and we offer 24 hour emergency service. We have the capability to coordinate nationwide installations.

888-651-SIGN

Corporate Offices:
142 Conchester Highway
Aston, PA 19014
610-497-0111
info@kcsignco.com

Delaware Sales Office
302.777.5080
New Jersey Sales Office
609.729.0200
Website
www.kcsignco.com

Our Capabilities

OUR CAPABILITIES

AWNINGS

BANNERS

BILLBOARDS

CARVED SIGNS

CHANNEL LETTERS

DIMENSIONAL LETTER

DIRECTIONALS

ELECTRIC SIGNS

ELECTRONIC MESSAGE
CENTERS

EVENT SIGNS

FLAGS & FLAGPOLES

MENU BOARDS

MONUMENTS

POST & PANEL SIGNS

REAL ESTATE SIGNS

RENTAL SIGNS

SPONSORSHIP SIGNS

STOREFRONT
ADVERTISEMENT SIGN

VEHICLE GRAPHICS

WINDOW GRAPHICS

Awnings

Interior & Exterior
Vinyl
Fabric
Backlit

Banners

Cloth
Canvas
Vinyl
Paper
Full-Color

Billboards

Flex-Face
Vinyl Graphics

Carved Signs

Carved / Sandblasted
Paint / Goldleaf

Channel Letters

Face-Lit
Halo-Lit
Neon / LED

Dimensional Letters

Cast
Interior/Exterior
Metal
PVC
Foam

Directionals

Parking Lot
Office / Hospital
Industrial Complex
Campus Building Markers

Electric Signs

Pole Signs
Building Signs
Custom-Shaped

Electronic Message Centers

Monochrome Displays
Full-Color Marquees
Time & Temperature

Event Signs

A-Frames
Golf Outings
Trade Shows
Tournaments

Flags and Flagpoles

Menu Boards

Illuminated
Non-Illuminated
Custom-Shaped
Full-Color
Changeable

Monuments

Brick
Foam
Stone
Metal

Post & Panel Signs

Wood
Metal

Real Estate Signs

Residential/Commercial
For Sale/Lease Signs
Managed By Signs

Rental Signs

Sponsorship Signs

Athletic Fields
Wood Signs
Banners

Storefront Advertisement Signs

A-Frames
Dry Erase
Changeable Letters

Vehicle Graphics

Cars/Trucks/Boats
Tractor Trailers
Fleet Vehicles/Equipment
Full Wraps

Window Graphics

Full-Color
Promotional Lettering
Large Format Prints

Complete Project Design

Full-Service Consulting

Logo Design & Development

CNC Router Services

Matthews Paint System

Service & Installation

National Sign Project Management



888-651-SIGN

Corporate Offices:
142 Conchester Highway
Aston, PA 19014
610-497-0111
info@kcsignco.com

Delaware Sales Office
302.777.5080

New Jersey Sales Office
609.729.0200

Website
www.kcsignco.com

KC SIGN
& Awnings

KC SIGN
& Awnings

SIGNS, AWNINGS, & GRAPHICS

A FULL SERVICE
SIGNAGE PROVIDER

888-651-SIGN

Corporate Offices:
142 Conchester Highway
Aston, PA 19014
610-497-0111
info@kcsignco.com

Chester County Branch:
417 West Baltimore Pike
West Grove, PA 19390
610-869-3434
westgrove@kcsignco.com

Delaware Branch:
3617 Kirkwood Highway
Wilmington, DE 19808
302-777-5080
delaware@kcsignco.com

Company Profile

KC Sign & Awnings is a full service, interior and exterior, signage provider with over 20 years of servicing the PA, NJ, DE, & MD region. Our company's commitment to delivering the highest quality products - on time, has helped us to become one of the top choices for signage in the area. Now with three locations and a full time on the road staff, we can be there to serve you faster than any other sign company in the region.

Our Services Include:

- Creative Design and Manufacturing
- Dedicated Sales People & Account Managers
- In House Fabrication, Installation, & Service
- Retail & Wholesale Channel Letter Manufacturing
- Site Surveys and Permitting Services
- Detailed Shop Drawings and Engineering
- Excavation, Concrete Footers, and High Pole Setting
- Custom Brick & Stone Work
- On-Time Installations, Service & Repairs
- Full Service Vinyl & Print Shop
- UL Listed Fabrication Shop
- The Highest In Quality - Guaranteed

Our corporate office and manufacturing facility is located 10 miles south of the Philadelphia International Airport with direct access to I-95 and other major roadways. With over 20,000 square feet and manufacturing space, 5 crane and bucket truck crews, and various other installation vehicles, KC Sign is here to meet all of your timeline and quality needs.



888-651-SIGN

Corporate Offices:
142 Conchester Highway
Aston, PA 19014
610-497-0111
info@kcsignco.com

Chester County Branch:
417 West Baltimore Pike
West Grove, PA 19390
610-869-3434
westgrove@kcsignco.com

Delaware Branch:
3617 Kirkwood Highway
Wilmington, DE 19808
302-777-5080
delaware@kcsignco.com

Company Profile

Design Capabilities:

Creative, quality signage displays an image of integrity and trust to the viewer. At KC Sign & Awnings, we strive to provide innovative and current designs for all our signage projects, as well as practical designs that can be easily implemented into the manufacturing process. Our degreed art designers will work directly with you to come up with a design that fits all of your needs.

Manufacturing Capabilities:

Custom interior and exterior signage such as pylon signs, wall signs, monuments, channel letters, electronic message centers, way-finding programs, ADA signage, bronze plaques and letters, specialty directories, scoreboards, carved signs, neon, flags and flagpoles, clocks, street signs, fabric and metal awnings, banners, and digital and vinyl graphics. Over 20,000 square feet of manufacturing space.

Installation Capabilities:

We employ four full time installation crews, including three high reach crane trucks, a two man bucket truck, and a platform lift truck. In addition, we have a dedicated excavating crew, vehicles for smaller scale signage installation, and we offer 24 hour emergency service. We have the capability to coordinate nationwide installations.

KC Sign is a Non-Union Shop.

KC Sign & Awnings Guarantees the Highest Quality Products.

888-651-SIGN

Corporate Offices:
142 Conchester Highway
Aston, PA 19014
610-497-0111
info@kcsignco.com

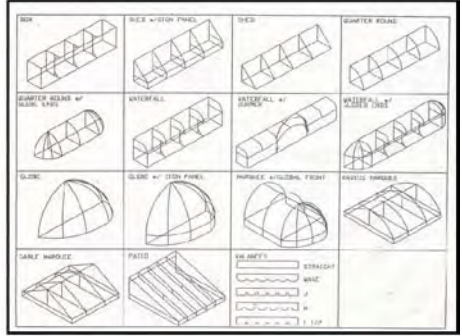
Chester County Branch:
417 West Baltimore Pike
West Grove, PA 19390
610-869-3434
westgrove@kcsignco.com

Delaware Branch:
3617 Kirkwood Highway
Wilmington, DE 19808
302-777-5080
delaware@kcsignco.com

AWNINGS

At KC Sign & Awnings, one of our strengths is the ability to fabricate custom aluminum framed awnings with vinyl or canvas canopies. Awnings can be internally illuminated and enhanced with painted & vinyl graphics. From custom shaped wall awnings, to long and intricate walk-way coverings.

KC Sign & Awnings can bring your building to life.



888-651-SIGN

Corporate Offices:
142 Conchester Highway
Aston, PA 19014
610-497-0111
info@kcsignco.com

Chester County Branch:
417 West Baltimore Pike
West Grove, PA 19390
610-869-3434
westgrove@kcsignco.com

Delaware Branch:
3617 Kirkwood Highway
Wilmington, DE 19808
302-777-5080
delaware@kcsignco.com

KC SIGN & Awnings

AWNINGS



888-651-SIGN

Corporate Offices:
142 Conchester Highway
Aston, PA 19014
610-497-0111
info@kcsignco.com

Chester County Branch:
417 West Baltimore Pike
West Grove, PA 19390
610-869-3434
westgrove@kcsignco.com

Delaware Branch:
3617 Kirkwood Highway
Wilmington, DE 19808
302-777-5080
delaware@kcsignco.com

BANNERS & GRAPHICS

Everyone will need temporary signage from time to time. Whether you have an upcoming event, retail sale, or are looking to recognize an achievement, we are here to help. At KC Sign & Awnings we can provide all types of banners, vinyl lettering, and digitally printed graphics for any application. Our in-house capabilities insure speedy delivery along with the highest level of quality control.



888-651-SIGN

Corporate Offices:
142 Conchester Highway
Aston, PA 19014
610-497-0111
info@kcsignco.com

Chester County Branch:
417 West Baltimore Pike
West Grove, PA 19390
610-869-3434
westgrove@kcsignco.com

Delaware Branch:
3617 Kirkwood Highway
Wilmington, DE 19808
302-777-5080
delaware@kcsignco.com

CARVED & SAND BLASTED SIGNAGE

Most commonly thought of as wooden carved signs, we use High Density Urethane (HDU) to make all of our carved signs. HDU is a material that, unlike wood, will never rot, bow, crack, or deteriorate. And unlike many sign shops, at KC Sign & Awnings we have invested in an industrial sign painting system utilizing Mathews base coat, clear coat, polyurethane paint. The way a sign is painted is key to the longevity of its finish. Many other sign shops roll apply their paints using a store bought brand, and this is the reason why you see many signs where their paint has peeled and faded after only a couple years outdoors.



888-651-SIGN

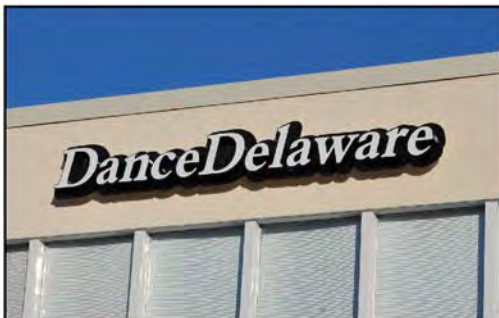
Corporate Offices:
142 Conchester Highway
Aston, PA 19014
610-497-0111
info@kcsignco.com

Chester County Branch:
417 West Baltimore Pike
West Grove, PA 19390
610-869-3434
westgrove@kcsignco.com

Delaware Branch:
3617 Kirkwood Highway
Wilmington, DE 19808
302-777-5080
delaware@kcsignco.com

CHANNEL LETTERS

Internally illuminated channel letters are commonly used to identify various buildings, businesses, & restaurants. At KC Sign & Awnings we manufacture all of our channel letters in house using the latest state of the art equipment. This assures on-time delivery and an ability to control the level of quality to which our channel letters are produced.



888-651-SIGN

Corporate Offices:
142 Conchester Highway
Aston, PA 19014
610-497-0111
info@kcsignco.com

Chester County Branch:
417 West Baltimore Pike
West Grove, PA 19390
610-869-3434
westgrove@kcsignco.com

Delaware Branch:
3617 Kirkwood Highway
Wilmington, DE 19808
302-777-5080
delaware@kcsignco.com

CHANNEL LETTERS



888-651-SIGN

Corporate Offices:
142 Conchester Highway
Aston, PA 19014
610-497-0111
info@kcsignco.com

Chester County Branch:
417 West Baltimore Pike
West Grove, PA 19390
610-869-3434
westgrove@kcsignco.com

Delaware Branch:
3617 Kirkwood Highway
Wilmington, DE 19808
302-777-5080
delaware@kcsignco.com

KC SIGN & Awnings

ELECTRONIC MESSAGE CENTERS (LEDs)

Why not use the most cost effective form of advertising while promoting a level of exceptional quality starting from the entrance of your center. Electronic Message Centers have been proven to increase sales from 15% - 150% in the first year. At KC Sign we are LED sign experts. With over 500 signs installed in the tri-state area you can be assured you are buying the best quality sign from a company who will be there to stand behind their product for years to come.



888-651-SIGN

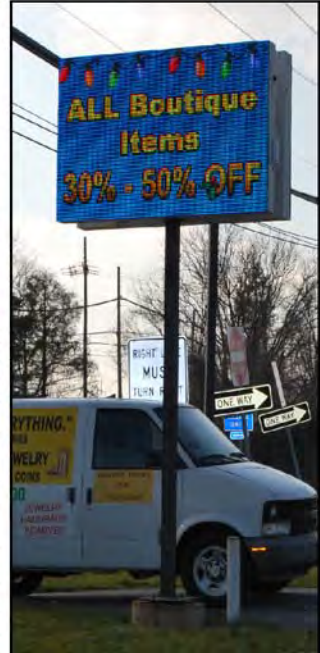
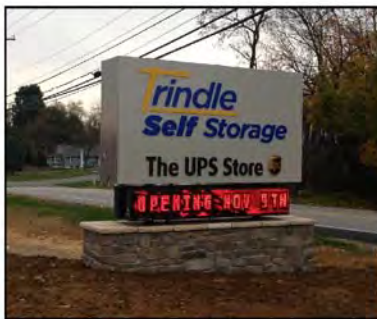
Corporate Offices:
142 Conchester Highway
Aston, PA 19014
610-497-0111
info@kcsignco.com

Chester County Branch:
417 West Baltimore Pike
West Grove, PA 19390
610-869-3434
westgrove@kcsignco.com

Delaware Branch:
3617 Kirkwood Highway
Wilmington, DE 19808
302-777-5080
delaware@kcsignco.com

KC SIGN & Awnings

ELECTRONIC MESSAGE CENTERS (LEDs)



888-651-SIGN

Corporate Offices:
142 Conchester Highway
Aston, PA 19014
610-497-0111
info@kcsignco.com

Chester County Branch:
417 West Baltimore Pike
West Grove, PA 19390
610-869-3434
westgrove@kcsignco.com

Delaware Branch:
3617 Kirkwood Highway
Wilmington, DE 19808
302-777-5080
delaware@kcsignco.com

ELECTRIC SIGN FABRICATION

Electric signs have become a staple of the sign industry ever since the invention of electricity. Our quality is unmatched in this area, with thousands of custom electric signs already installed. Whether you are looking for a basic square sign cabinet, channel letters, or a custom made sign that demands attention, KC Sign can meet your needs!



888-651-SIGN

Corporate Offices:
142 Conchester Highway
Aston, PA 19014
610-497-0111
info@kcsignco.com

Chester County Branch:
417 West Baltimore Pike
West Grove, PA 19390
610-869-3434
westgrove@kcsignco.com

Delaware Branch:
3617 Kirkwood Highway
Wilmington, DE 19808
302-777-5080
delaware@kcsignco.com

EXTERIOR NON-ILLUMINATED METAL & WOOD SIGNS

Non-illuminated signs can be manufactured from a number of different materials including MDO & aluminum. Most include 3M vinyl graphics applied to the face and can be installed on building fascias, between posts, and over existing signage.



888-651-SIGN

Corporate Offices:
142 Conchester Highway
Aston, PA 19014
610-497-0111
info@kcsignco.com

Chester County Branch:
417 West Baltimore Pike
West Grove, PA 19390
610-869-3434
westgrove@kcsignco.com

Delaware Branch:
3617 Kirkwood Highway
Wilmington, DE 19808
302-777-5080
delaware@kcsignco.com

INTERIOR & EXTERIOR DIMENSIONAL LETTERS

Dimensional letters can be manufactured from many different types of materials including PVC, aluminum, brass, bronze, acrylic, and plastic. Dimensional letters can be used to identify building & room names and are a good choice for long-term signage needs. Our letters can be either illuminated or non-illuminated.

At KC Sign & Awnings we manufacture letters to fit any application, interior and exterior.



888-651-SIGN

Corporate Offices:
142 Conchester Highway
Aston, PA 19014
610-497-0111
info@kcsignco.com

Chester County Branch:
417 West Baltimore Pike
West Grove, PA 19390
610-869-3434
westgrove@kcsignco.com

Delaware Branch:
3617 Kirkwood Highway
Wilmington, DE 19808
302-777-5080
delaware@kcsignco.com

MENU BOARDS

At KC Sign & Awnings we manufacture custom menu boards for a number of over-the-counter restaurants and retail stores. Menu boards fabricated from durable materials can include custom graphics to match your business's theme and include changeable price areas.



888-651-SIGN

Corporate Offices:
142 Conchester Highway
Aston, PA 19014
610-497-0111
info@kcsignco.com

Chester County Branch:
417 West Baltimore Pike
West Grove, PA 19390
610-869-3434
westgrove@kcsignco.com

Delaware Branch:
3617 Kirkwood Highway
Wilmington, DE 19808
302-777-5080
delaware@kcsignco.com

MONUMENTS

Promote a level of exceptional quality starting from the entrance of your center. Monument signage from KC Sign will create a positive impression of your center that will be remembered.



888-651-SIGN

Corporate Offices:
142 Conchester Highway
Aston, PA 19014
610-497-0111
info@kcsignco.com

Chester County Branch:
417 West Baltimore Pike
West Grove, PA 19390
610-869-3434
westgrove@kcsignco.com

Delaware Branch:
3617 Kirkwood Highway
Wilmington, DE 19808
302-777-5080
delaware@kcsignco.com

KC SIGN & Awnings

SCOREBOARDS

Each year we install nearly 50 scoreboards for schools & clubs in PA, NJ, MD, and DE. At KC Sign you can count on our expertise to help guide you to choose the best fitting scoreboard for your use. Our experience will ensure that your scoreboard is installed correctly.



888-651-SIGN

Corporate Offices:
142 Conchester Highway
Aston, PA 19014
610-497-0111
info@kcsignco.com

Chester County Branch:
417 West Baltimore Pike
West Grove, PA 19390
610-869-3434
westgrove@kcsignco.com

Delaware Branch:
3617 Kirkwood Highway
Wilmington, DE 19808
302-777-5080
delaware@kcsignco.com

KC SIGN & Awnings

SIGN & LIGHTING SERVICE

Our fully stocked crane and bucket trucks enable us to service all of your existing signage, parking lot lighting, & flag poles. Whether you have one location or many, KC Sign & Awning can service all of your sign & lighting needs.



888-651-SIGN

Corporate Offices:
142 Conchester Highway
Aston, PA 19014
610-497-0111
info@kcsignco.com

Chester County Branch:
417 West Baltimore Pike
West Grove, PA 19390
610-869-3434
westgrove@kcsignco.com

Delaware Branch:
3617 Kirkwood Highway
Wilmington, DE 19808
302-777-5080
delaware@kcsignco.com

SHOPPING CENTER SIGNAGE

Each Shopping Center needs a large sign to advertise the businesses inside. Whether the sign code allows for a 50 square foot sign or a 60 foot tall pylon sign, we can design a sign to fit both your needs and your budget.



888-651-SIGN

Corporate Offices:
142 Conchester Highway
Aston, PA 19014
610-497-0111
info@kcsignco.com

Chester County Branch:
417 West Baltimore Pike
West Grove, PA 19390
610-869-3434
westgrove@kcsignco.com

Delaware Branch:
3617 Kirkwood Highway
Wilmington, DE 19808
302-777-5080
delaware@kcsignco.com

VEHICLE GRAPHICS & WRAPS

KC Sign & Awnings we can add graphics to any type of vehicle, from custom wraps to simple identification lettering. We use only the best quality vinyls from 3M which ensures a long term life of the graphics. Each year we install graphics on hundreds of vehicles so we have the experience necessary to make sure that the job is done right.



888-651-SIGN

Corporate Offices:
142 Conchester Highway
Aston, PA 19014
610-497-0111
info@kcsignco.com

Chester County Branch:
417 West Baltimore Pike
West Grove, PA 19390
610-869-3434
westgrove@kcsignco.com

Delaware Branch:
3617 Kirkwood Highway
Wilmington, DE 19808
302-777-5080
delaware@kcsignco.com

KC SIGN & Awnings

VEHICLE GRAPHICS & WRAPS



888-651-SIGN

Corporate Offices:
142 Conchester Highway
Aston, PA 19014
610-497-0111
info@kcsignco.com

Chester County Branch:
417 West Baltimore Pike
West Grove, PA 19390
610-869-3434
westgrove@kcsignco.com

Delaware Branch:
3617 Kirkwood Highway
Wilmington, DE 19808
302-777-5080
delaware@kcsignco.com

DIRECTORIES & WAY-FINDING SIGNAGE

Way-finding signage is key to any facility in directing customers, employees, deliveries, and contractors to their correct destinations. At KC Sign & Awnings we can provide all types of way-finding signage to fit any application, interior and exterior. We can provide stock directories, ADA room signage, and custom fabricated architectural signage incorporating your facilities individual look and style. From one sign to an entire identification package, KC Sign can fulfill all your needs.



888-651-SIGN

Corporate Offices:
142 Conchester Highway
Aston, PA 19014
610-497-0111
info@kcsignco.com

Chester County Branch:
417 West Baltimore Pike
West Grove, PA 19390
610-869-3434
westgrove@kcsignco.com

Delaware Branch:
3617 Kirkwood Highway
Wilmington, DE 19808
302-777-5080
delaware@kcsignco.com

MULTIPLE LOCATION & FULL CAMPUS SIGN INSTALLATIONS

Are you a College or University, Financial Institution, Medical Facility, or a retail business and need more than one sign made at a time? KC Sign & Awnings can help. We have years of experience working on large scale sign identification projects. Whether the signs need to be installed locally by one of our highly trained crews or packed, shipped, and coordinated for installation on the other side of the country, you can be assured that KC Sign & Awnings can get the job done right for you.

Kennedy Health Systems



Franklin Mint Federal Credit Union



Neumann University



West Chester University



Liberty Gas



888-651-SIGN

Corporate Offices:
142 Conchester Highway
Aston, PA 19014
610-497-0111
info@kcsignco.com

Chester County Branch:
417 West Baltimore Pike
West Grove, PA 19390
610-869-3434
westgrove@kcsignco.com

Delaware Branch:
3617 Kirkwood Highway
Wilmington, DE 19808
302-777-5080
delaware@kcsignco.com

Our Capabilities

OUR CAPABILITIES

AWNINGS

BANNERS

BILLBOARDS

CARVED SIGNS

CHANNEL LETTERS

DIMENSIONAL LETTER

DIRECTIONALS

ELECTRIC SIGNS

ELECTRONIC MESSAGE CENTERS

EVENT SIGNS

FLAGS & FLAGPOLES

MENU BOARDS

MONUMENTS

POST & PANEL SIGNS

REAL ESTATE SIGNS

RENTAL SIGNS

SPONSORSHIP SIGNS

STOREFRONT ADVERTISEMENT SIGN

VEHICLE GRAPHICS

WINDOW GRAPHICS

Awnings

Interior & Exterior
Vinyl
Fabric
Backlit

Banners

Cloth
Canvas
Vinyl
Paper
Full-Color

Billboards

Flex-Face
Vinyl Graphics

Carved Signs

Carved / Sandblasted
Paint / Goldleaf

Channel Letters

Face-Lit
Halo-Lit
Neon / LED

Dimensional Letters

Cast
Interior/Exterior
Metal
PVC
Foam

Directionals

Parking Lot
Office / Hospital
Industrial Complex
Campus Building Markers

Electric Signs

Pole Signs
Building Signs
Custom-Shaped

Electronic Message Centers

Monochrome Displays
Full-Color Marquees
Time & Temperature

Event Signs

A-Frames
Golf Outings
Trade Shows
Tournaments

Flags and Flagpoles

Menu Boards

Illuminated
Non-Illuminated
Custom-Shaped
Full-Color
Changeable

Monuments

Brick
Foam
Stone
Metal

Post & Panel Signs

Wood
Metal

Real Estate Signs

Residential/Commercial
For Sale/Lease Signs
Managed By Signs

Rental Signs

Sponsorship Signs

Athletic Fields
Wood Signs
Banners

Storefront Advertisement Signs

A-Frames
Dry Erase
Changeable Letters

Vehicle Graphics

Cars/Trucks/Boats
Tractor Trailers
Fleet Vehicles/Equipment
Full Wraps

Window Graphics

Full-Color
Promotional Lettering
Large Format Prints

Complete Project Design

Full-Service Consulting

Logo Design & Development

CNC Router Services

Matthews Paint System

Service & Installation

National Sign Project Management

888-651-SIGN

Corporate Offices:
142 Conchester Highway
Aston, PA 19014
610-497-0111
info@kcsignco.com

Chester County Branch:
417 West Baltimore Pike
West Grove, PA 19390
610-869-3434
westgrove@kcsignco.com

Delaware Branch:
3617 Kirkwood Highway
Wilmington, DE 19808
302-777-5080
delaware@kcsignco.com